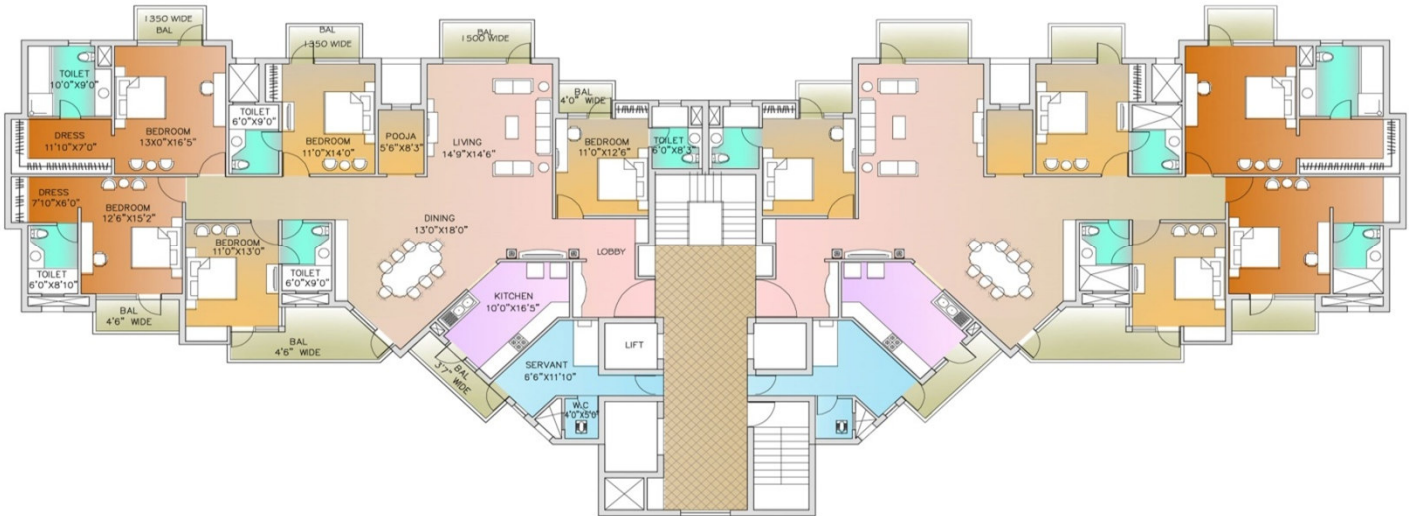


Type-A Typical Floor Plan

5 Bedroom + Servant

Total Saleable Area = 3650 sq.ft.



Type-B Typical Floor Plan

4 Bedroom + Servant

Total Saleable Area = 2450 sq.ft.



Type-C Typical Floor Plan
 4 Bedroom
 Total Saleable Area = 2160 sq.ft



Type-D Typical Floor Plan

3 Bedroom + Servant

Total Saleable Area = 1920 sq.

